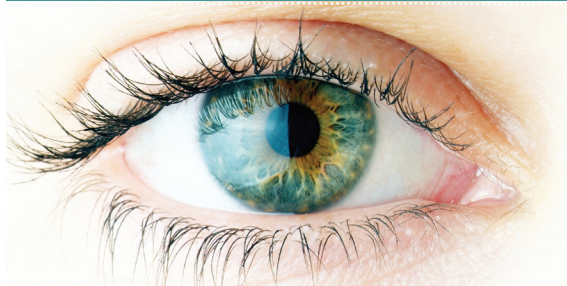


SAVE THE DATE

May 3-5, 2012

Hilton Baltimore  
401 W. Pratt Street  
Baltimore, MD 21201

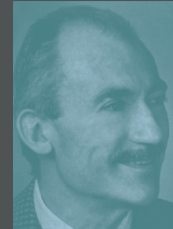


# Advanced Orbital Symposium:

## A Tribute to the Orbital Surgery of Paul Tessier

The *Advanced Orbital Surgery Symposium, A Tribute to the Orbital Surgery of Paul Tessier* will gather national, international, and multispecialty leaders to share the latest evidence, insights, and their vast expertise related to the management of craniofacial fractures, congenital, post-traumatic and post-oncologic deformities, and management of surgical complications—all with a focus on the orbit. The dynamic faculty will provide a diverse mix of clinical outcomes experience and surgical techniques to apply to the decision-making process and management of primary and secondary reconstruction, in common and challenging cases. Topics include clinical and practical orbital anatomy, surgical approaches, techniques, managing and avoiding complications, choices in fixation and types of grafts, and considerations for incisions.

Specialists in oral and maxillofacial surgery, plastic and reconstructive surgery, otolaryngology/head and neck surgery, and oculo-plastic surgery will experience the ongoing impact of Dr. Tessier's contributions to orbital surgery in the educational lectures, the sharing of experience, and the opportunity to engage and network with a broad array of experts and colleagues. Interactive panel discussions will offer the opportunity to debate the evidence, exchange ideas, and gain insights to assist you in managing your most challenging cases.



**Tribute** Paul Tessier, MD passed away in Paris on June 5, 2008, but his impact on the field of craniofacial surgery lives on as the Gold Standard by which excellence is measured.

Throughout the 1950s, Dr. Tessier began his innovative work that would lead to the clinical use of bone grafts to fill in gaps in the bone that previously had jeopardized the success of osteotomies to correct midfacial retrusion and subsequently creating craniofacial surgery.

During the late 1960s and the 1970s, Dr. Tessier developed all of the procedures that are currently used in performing craniofacial surgery; transcranial and subcranial correction of orbital dystopia such as orbital hypertelorism, correction of the facial deformity of Treacher Collins-Franceschetti syndrome, and correction of oro-ocular clefts.

The impact of Dr. Tessier's work has affected many surgical specialties, including plastic surgery, otorhinolaryngology, ophthalmology, neurosurgery, trauma surgery, and oral surgery. Many of his techniques have found significant places in the performance of plastic surgery, where Dr. Tessier's methods of autogenous bone grafts have often been seen as an improvement over the traditional use of silicone or acrylic. He also coined the term "SMAS" and created the subperiosteal facelift or "masklift". Dr. Tessier's work is so far reaching that virtually everyone performing procedures of the craniofacial specialty was either trained by Dr. Tessier himself, or by surgeons he trained.

We dedicate this conference to contributions of Paul Tessier as a mentor and teacher and honor his innovations in the field of craniofacial surgery.

## CHAIRMAN

### **Eduardo D. Rodriguez, MD, DDS**

Associate Professor and Chief  
Plastic, Reconstructive and  
Maxillofacial Surgery  
R Adams Cowley Shock Trauma  
Center  
University of Maryland School of  
Medicine  
Baltimore, MD

## CO-CHAIRMEN

### **Michael P. Grant, MD, PhD**

Assistant Professor  
Department of Ophthalmology  
and Plastic Surgery  
Wilmer Ophthalmological Institute  
Johns Hopkins University School  
of Medicine  
Baltimore, MD

### **Alexander Schramm, MD, DDS, PhD**

Professor and Chairman  
Department of Oral and  
Cranio-Maxillofacial Surgery  
Ulm University  
Ulm, Germany

### **E. Bradley Strong, MD, FACS**

Associate Professor  
Department of Otolaryngology  
University of California Davis  
Health System  
Sacramento, CA

### **Paul N. Manson, MD**

Professor  
Department of Plastic and  
Reconstructive Surgery  
Johns Hopkins School of  
Medicine  
Baltimore, MD

## INTERNATIONAL FACULTY

### **George E. Anastassov, MD, DDS**

Associate Clinical Professor  
Department of Cranio-  
Maxillofacial Surgery  
Mount Sinai School of Medicine  
and Maxillofacial Surgery Services  
New York, NY

### **R. Bryan Bell, MD, DDS, FACS**

Affiliate Associate Professor  
Department of Oral and  
Maxillofacial Surgery  
Oregon Health & Science  
University  
University of Washington  
Portland, OR

### **Branko Bojovic, MD**

Assistant Professor  
Plastic, Reconstructive and  
Maxillofacial Surgery  
R Adams Crowley Shock Trauma  
Center  
University of Maryland School of  
Medicine  
Baltimore, MD

### **James H. Carraway, MD**

Professor  
Department of Plastic and  
Cosmetic Surgery  
Eastern Virginia Medical School  
Health System  
Virginia Beach, VA

### **Luigi Clauser, MD, DMD**

Director & Chief  
Department of Cranio-  
Maxillofacial Surgery  
Center for Orbital Pathology and  
Surgery  
St. Anna Hospital and University  
Ferrara, Italy

### **Bernard J. Costello, MD, DMD, FACS**

Professor and Program Director  
Department of Oral and  
Maxillofacial Surgery  
University of Pittsburgh  
Pittsburgh, PA

### **Amir Dorafshar, MBChB**

Assistant Professor  
Department of Plastic and  
Reconstructive Surgery  
Johns Hopkins School of Medicine  
and University of Maryland  
Baltimore, MD

### **Edward Ellis III, DDS, MS**

Professor and Chair  
Department of Oral and  
Maxillofacial Surgery  
University of Texas Health Science  
Center at San Antonio  
San Antonio, TX

### **Nils-Claudis Gellrich, MD, DMD**

Professor and Director  
Department of Oral and  
Maxillofacial Surgery  
Hannover Medical School  
Hannover, Germany

### **Robert A. Goldberg, MD**

Chief, Orbital and Ophthalmic  
Plastic Surgery  
Jules Stein Eye Institute  
University of California Los  
Angeles Health System  
Los Angeles, CA

### **Chad Gordon, DO**

Assistant Professor  
Department of Plastic and  
Reconstructive Surgery  
Johns Hopkins School of  
Medicine  
Baltimore, MD

### **Joseph S. Gruss, MD**

Professor  
Division of Plastic Surgery  
University of Washington School  
of Medicine  
Seattle, WA

### **Richard A. Hopper, MD**

Chief of Plastic Surgery  
Surgical Director of the  
Craniofacial Center  
Seattle Children's Hospital  
Seattle, WA

### **Henry Kawamoto Jr., DDS, MD**

Clinical Professor  
Chief of Pediatric Plastic Surgery  
Division of Plastic &  
Reconstructive Surgery  
University of California-Los Angeles  
Los Angeles, CA

### **Joseph G. McCarthy, MD**

Lawrence D. Bell Professor of  
Plastic Surgery  
Chair, Department of Plastic  
Surgery  
Director Plastic and  
Reconstruction Surgery  
New York University Langone  
Medical Center  
New York, NY

### **Shannath Merbs, MD, PhD**

Associate Professor  
Department of Ophthalmology  
and Oncology  
Wilmer Ophthalmological Institute  
Johns Hopkins School of  
Medicine  
Baltimore, MD

### **John Phillips, MD, MA, FRCS(C)**

Associate Professor  
Department of Surgery  
University of Toronto  
Toronto, ON

### **Charles Soparkar, MD, PhD, FACS**

Assistant Professor  
Department of Ophthalmology  
Cullen Eye Institute  
Baylor College of Medicine  
Houston, TX

### **Eric Sorrel, MD**

Paris, France

### **Prem Subramanian, MD**

Associate Professor  
Department of Ophthalmology  
Wilmer Eye Institute  
Johns Hopkins University School  
of Medicine  
Baltimore, MD

### **S. Anthony Wolfe, MD**

Chief  
Department of Plastic and  
Reconstructive Surgery  
Miami Children's Hospital  
Miami, FL

### **Michael Yaremchuk, MD**

Director, Craniofacial Surgery  
Massachusetts General Hospital  
Boston, MA

## CREDIT STATEMENT

CME Outfitters, LLC,  
is accredited by the  
Accreditation Council for  
Continuing Medical Education  
to provide continuing medical  
education for physicians.

CME Outfitters, LLC,  
designates this live activity  
for a maximum of 22.0 AMA  
PRA Category 1 Credit™.  
Physicians should claim only  
the credit commensurate  
with the extent of their  
participation in the activity.

*All other clinicians will either  
receive a CME Attendance  
Certificate.*

## REGISTRATION

Register online at  
[www.cmeoutfitters.com/  
orbitalcourse2012](http://www.cmeoutfitters.com/orbitalcourse2012)

Questions?  
Call **877.CME.PROS**

## REGISTRATION FEES

Standard registration: \$500

Nurse registration: \$50

Resident registration: \$50

*Registration fee applies to  
educational activity only.  
Travel and lodging expenses  
are the responsibility of  
the attendee. The cost of  
this CME activity, plus your  
transportation, meals, and  
lodging expenses may be tax  
deductible as educational  
expenses. Please consult your  
tax advisor for more details.*